

FINEX

MULTI-PURPOSE FIBER CEMENT PANELS

Exterior Insulation's Protection on Foundation Walls



LIMITED
LIFETIME
WARRANTY

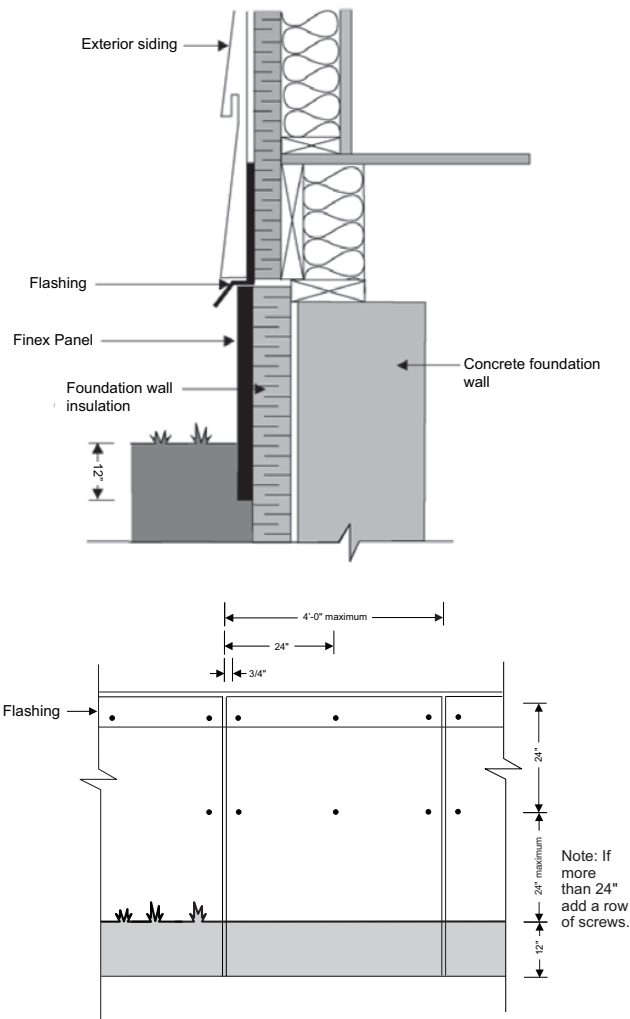
www.gofinex.com

FOUNDATIONS

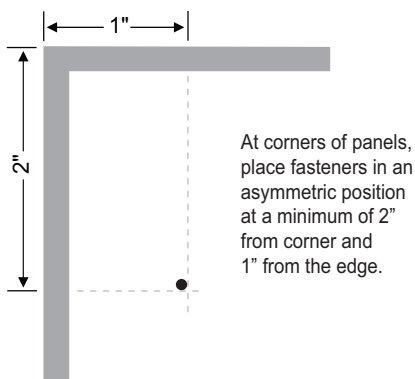
Any construction should be made in accordance with Local Building Codes.

Cut FINEX panels to maximum 4' (1,22 m) lengths

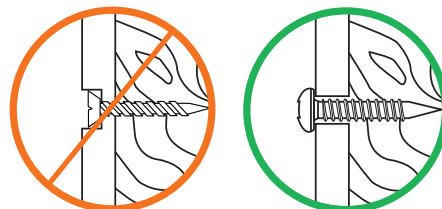
- Install panels 12" (300 mm) below ground level and fasten every 24" (600 mm) along the width and height of the panels.
- Drill holes using a bit with a diameter that is 1/16" (1,5 mm) larger than the diameter of the screws. Fasteners must penetrate at least 3/4" (19 mm) into the concrete or furring strips.
- Fasteners must be placed 3/4" (19 mm) minimum from the edges of the panels.
- At corners of panels, place fasteners in an asymmetric position at a minimum of 2" from corner and 1" from the edge.
- Leave a minimum space of 1/8" (3 mm) between panels for expansion. If a flexible adhesive sealant is used, leave a minimum space of 1/4" (6 mm). A bond breaking tape is required to prevent the flexible sealant from adhering under the joint. Sealing of the joints is not required.
- The use of flashing is recommended to cover the screws on the top part of the panels. Use backfill to cover all other screws.



Fasteners in an asymmetric position at the corners of panels



NOTE: Do not countersink screw head with 1/4" (6 mm) panel.



ALWAYS APPLY THE 3 FOLLOWING POINTS:

1. Panels must be dry prior to installation.
2. Leave a minimum space of 1/8" (3 mm) as an expansion joint between panels. If a flexible adhesive sealant is used, leave a minimum space of 1/2" (12 mm) along the width of the panels and 1/4" (6 mm) along the length. A bond breaking tape is required to prevent the flexible sealant from adhering under the joint.
3. Pre-drill holes that are 1/16" (1.5 mm) larger than the diameter of the screws that will be used.

FINEX
THE FIBER CEMENT EXPERTS
www.gofinex.com

1-877-92FINEX (34639)