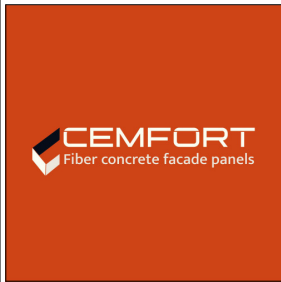


**DRAWING CAPTION**

- 01 ASSEMBLY OF A STEEL HALF-TIMBERED WALL ACCORDING TO THE ARCHITECT.
- 02 WEATHER AND AIR BARRIER ACCORDING TO THE ARCHITECT.
- 03 MINERAL WOOL INSULATION, THICKNESS ACCORDING TO THE ARCHITECT.
- 04 STEEL PROFILE IN "Z", SIZE ACCORDING TO REQUIREMENTS.
- 05 5" COLD-FORMED OMEGA PROFILE.
- 06 FIXING SCREW BY CEMFORT.
- 07 CEMFORT FIBER-REINFORCED CONCRETE FACADE PANEL.
- 08 COLORED STEEL JOINT FILLER BY CEMFORT.



CEMFORT PANELS INC.  
 1915 RUE ALFRED-NOBEL  
 SALABERRY-DE-VALLEYFIELD  
 (QUEBEC) CANADA J6T 0E3

THE CEMFORT GUIDE DETAILS ARE PROVIDED FOR GENERAL REFERENCE ONLY AND REPRESENT TYPICAL CONDITIONS FOR CLADDING FASTENING SYSTEMS. PROJECT-SPECIFIC ENGINEERING WORK IS REQUIRED TO ACCOUNT FOR WIND LOAD, CLADDING WEIGHT, TYPE, PROJECTION, SPACING, ETC. PLEASE CONTACT CEMFORT FOR FURTHER INFORMATION. ALL IMPLIED WARRANTIES, INCLUDING THOSE RELATING TO FITNESS FOR A PARTICULAR PURPOSE, ARE EXPRESSLY EXCLUDED.

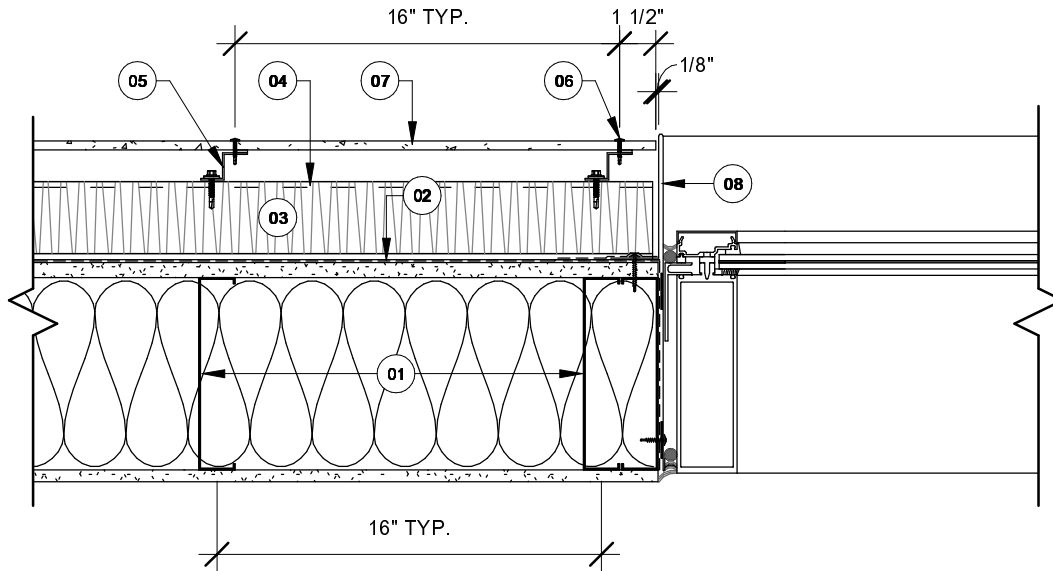
TITLE :  
 PLAN DETAIL - STEEL FRAMED WALL

SYSTEM :  
 CEM-SCREW

DATE :  
 2024-10-24

SCALE :  
 1 1/2" = 1'-0"

PAGE :  
 1/9



### DRAWING CAPTION

- |  |  |
|--|--|
| <p>01 ASSEMBLY OF A STEEL HALF-TIMBERED WALL ACCORDING TO THE ARCHITECT.</p> <p>02 WEATHER AND AIR BARRIER ACCORDING TO THE ARCHITECT.</p> <p>03 MINERAL WOOL INSULATION, THICKNESS ACCORDING TO THE ARCHITECT.</p> <p>04 STEEL PROFILE IN "Z", SIZE ACCORDING TO REQUIREMENTS.</p> <p>05 COLD-FORMED "Z" PROFILE.</p> | <p>06 FIXING SCREW BY CEMFORT.</p> <p>07 CEMFORT FIBER-REINFORCED CONCRETE FACADE PANEL.</p> <p>08 BENT STEEL SHEET, BY THE INSTALLER.</p> |
|--|--|



CEMFORT PANELS INC.  
 1915 RUE ALFRED-NOBEL  
 SALABERRY-DE-VALLEYFIELD  
 (QUEBEC) CANADA J6T 0E3

THE CEMFORT GUIDE DETAILS ARE PROVIDED FOR GENERAL REFERENCE ONLY AND REPRESENT TYPICAL CONDITIONS FOR CLADDING FASTENING SYSTEMS. PROJECT-SPECIFIC ENGINEERING WORK IS REQUIRED TO ACCOUNT FOR WIND LOAD, CLADDING WEIGHT, TYPE, PROJECTION, SPACING, ETC. PLEASE CONTACT CEMFORT FOR FURTHER INFORMATION. ALL IMPLIED WARRANTIES, INCLUDING THOSE RELATING TO FITNESS FOR A PARTICULAR PURPOSE, ARE EXPRESSLY EXCLUDED.

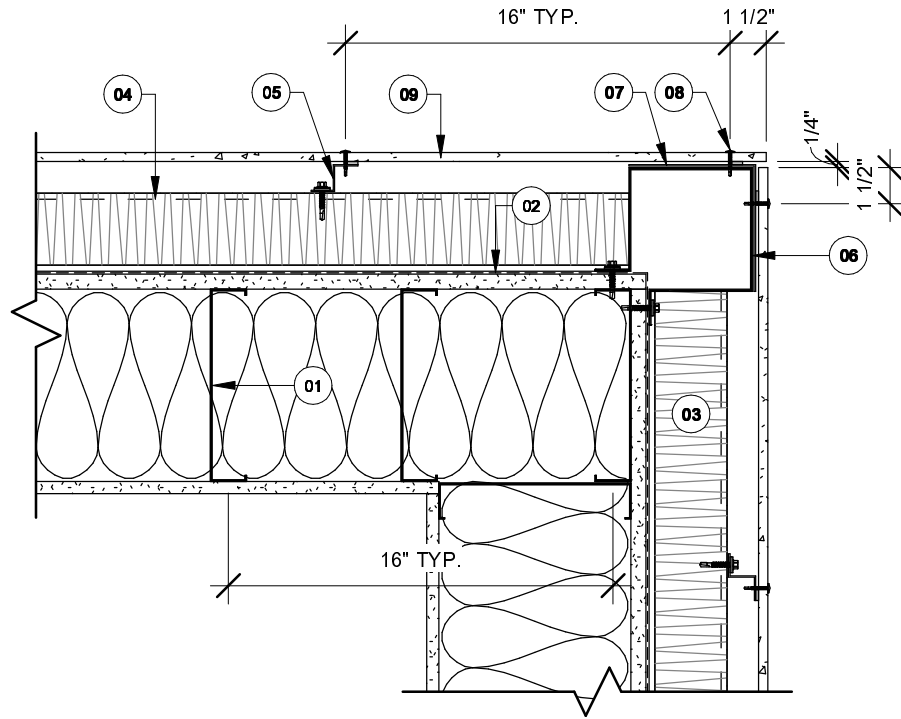
TITLE :  
 PLAN DETAIL - WINDOW JAMB

SYSTEM :  
 CEM-SCREW

DATE :  
 2024-10-24

SCALE :  
 1 1/2" = 1'-0"

PAGE :  
 2/9



**DRAWING CAPTION**

- 01** ASSEMBLY OF A STEEL HALF-TIMBERED WALL ACCORDING TO THE ARCHITECT.

**02** WEATHER AND AIR BARRIER ACCORDING TO THE ARCHITECT.

**03** MINERAL WOOL INSULATION, THICKNESS ACCORDING TO THE ARCHITECT.

**04** STEEL PROFILE IN "Z", SIZE ACCORDING TO REQUIREMENTS.

**05** COLD-FORMED "Z" PROFILE.
- 06** CORNER STEEL PROFILE, SIZE AS REQUIRED.

**07** COLORED STEEL CORNER MOLDING BY CEMFORT.

**08** FIXING SCREW BY CEMFORT.

**09** CEMFORT FIBER-REINFORCED CONCRETE FACADE PANEL.



CEMFORT PANELS INC.  
 1915 RUE ALFRED-NOBEL  
 SALABERRY-DE-VALLEYFIELD  
 (QUEBEC) CANADA J6T 0E3

THE CEMFORT GUIDE DETAILS ARE PROVIDED FOR GENERAL REFERENCE ONLY AND REPRESENT TYPICAL CONDITIONS FOR CLADDING FASTENING SYSTEMS. PROJECT-SPECIFIC ENGINEERING WORK IS REQUIRED TO ACCOUNT FOR WIND LOAD, CLADDING WEIGHT, TYPE, PROJECTION, SPACING, ETC. PLEASE CONTACT CEMFORT FOR FURTHER INFORMATION. ALL IMPLIED WARRANTIES, INCLUDING THOSE RELATING TO FITNESS FOR A PARTICULAR PURPOSE, ARE EXPRESSLY EXCLUDED.

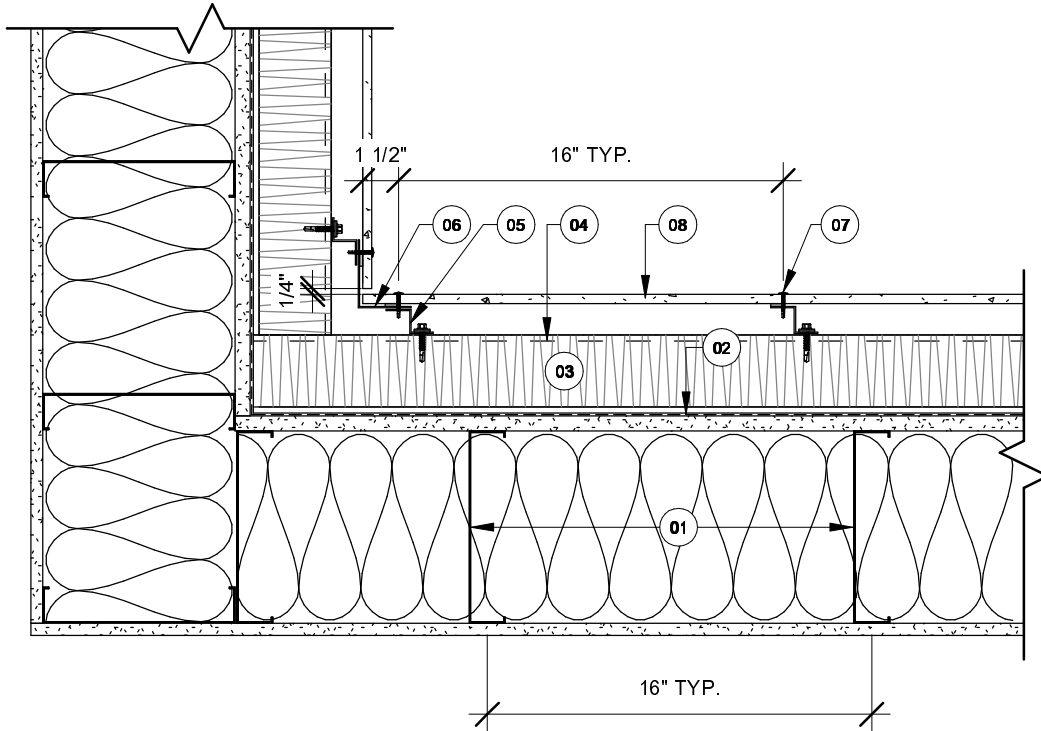
TITLE :  
 PLAN DETAIL - EXTERNAL CORNER

SYSTEM :  
 CEM-SCREW

DATE :  
 2024-10-24

SCALE :  
 1 1/2" = 1'-0"

PAGE :  
 3/9



**DRAWING CAPTION**

- 01** ASSEMBLY OF A STEEL HALF-TIMBERED WALL ACCORDING TO THE ARCHITECT.

**02** WEATHER AND AIR BARRIER ACCORDING TO THE ARCHITECT.

**03** MINERAL WOOL INSULATION, THICKNESS ACCORDING TO THE ARCHITECT.

**04** STEEL PROFILE IN "Z", SIZE ACCORDING TO REQUIREMENTS.

**05** COLD-FORMED "Z" PROFILE.
- 06** COLORED STEEL CORNER MOLDING BY CEMFORT.

**07** FIXING SCREW BY CEMFORT.

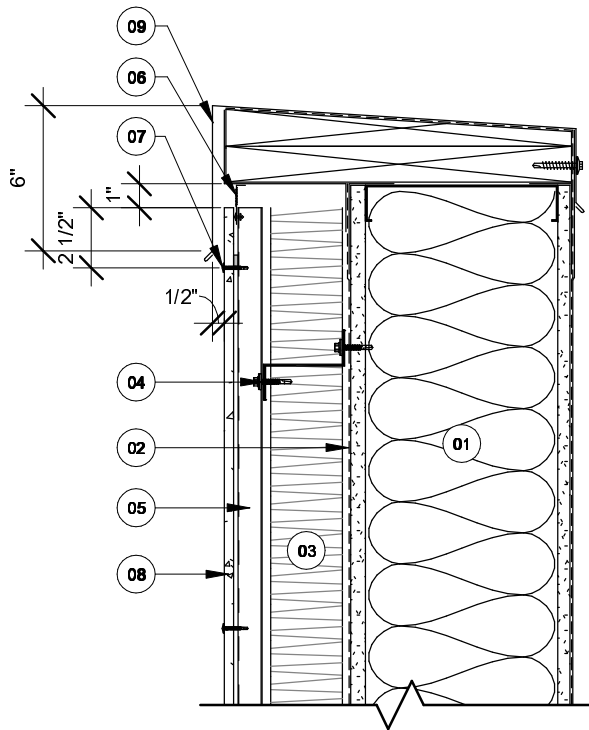
**08** CEMFORT FIBER-REINFORCED CONCRETE FACADE PANEL.



CEMFORT PANELS INC.  
 1915 RUE ALFRED-NOBEL  
 SALABERRY-DE-VALLEYFIELD  
 (QUEBEC) CANADA J6T 0E3

THE CEMFORT GUIDE DETAILS ARE PROVIDED FOR GENERAL REFERENCE ONLY AND REPRESENT TYPICAL CONDITIONS FOR CLADDING FASTENING SYSTEMS. PROJECT-SPECIFIC ENGINEERING WORK IS REQUIRED TO ACCOUNT FOR WIND LOAD, CLADDING WEIGHT, TYPE, PROJECTION, SPACING, ETC. PLEASE CONTACT CEMFORT FOR FURTHER INFORMATION. ALL IMPLIED WARRANTIES, INCLUDING THOSE RELATING TO FITNESS FOR A PARTICULAR PURPOSE, ARE EXPRESSLY EXCLUDED.

TITLE :		PLAN DETAIL - INTERNAL CORNER	
SYSTEM :	CEM-SCREW	DATE :	2024-10-24
SCALE :	1 1/2" = 1'-0"	PAGE :	4/9



### DRAWING CAPTION

- |   |  |
|---|--|
| 01 ASSEMBLY OF A STEEL HALF-TIMBERED WALL ACCORDING TO THE ARCHITECT. | 06 VENTILATION GRILLE.                             |
| 02 WEATHER AND AIR BARRIER ACCORDING TO THE ARCHITECT.                | 07 FIXING SCREW BY CEMFORT.                        |
| 03 MINERAL WOOL INSULATION, THICKNESS ACCORDING TO THE ARCHITECT.     | 08 CEMFORT FIBER-REINFORCED CONCRETE FACADE PANEL. |
| 04 STEEL PROFILE IN "Z", SIZE ACCORDING TO REQUIREMENTS.              | 09 METAL FLASHING, BY THE INSTALLER.               |
| 05 VERTICAL COLD-FORMED "Z" PROFILE.                                  |  |



CEMFORT PANELS INC.  
1915 RUE ALFRED-NOBEL  
SALABERRY-DE-VALLEYFIELD  
(QUEBEC) CANADA J6T 0E3

THE CEMFORT GUIDE DETAILS ARE PROVIDED FOR GENERAL REFERENCE ONLY AND REPRESENT TYPICAL CONDITIONS FOR CLADDING FASTENING SYSTEMS. PROJECT-SPECIFIC ENGINEERING WORK IS REQUIRED TO ACCOUNT FOR WIND LOAD, CLADDING WEIGHT, TYPE, PROJECTION, SPACING, ETC. PLEASE CONTACT CEMFORT FOR FURTHER INFORMATION. ALL IMPLIED WARRANTIES, INCLUDING THOSE RELATING TO FITNESS FOR A PARTICULAR PURPOSE, ARE EXPRESSLY EXCLUDED.

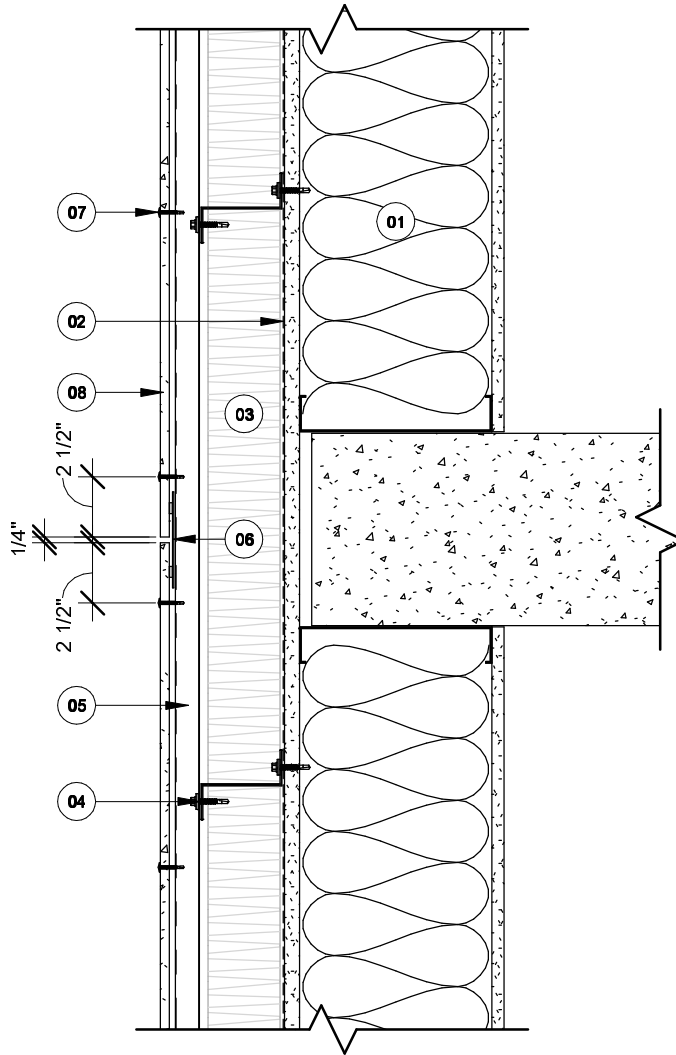
TITLE :  
TYPICAL PARAPET DETAIL

SYSTEM :  
CEM-SCREW

DATE :  
2024-10-24

SCALE :  
1 1/2" = 1'-0"

PAGE :  
5/9



**DRAWING CAPTION**

- 01 ASSEMBLY OF A STEEL HALF-TIMBERED WALL ACCORDING TO THE ARCHITECT.
- 02 WEATHER AND AIR BARRIER ACCORDING TO THE ARCHITECT.
- 03 MINERAL WOOL INSULATION, THICKNESS ACCORDING TO THE ARCHITECT.
- 04 STEEL PROFILE IN "Z", SIZE ACCORDING TO REQUIREMENTS.
- 05 VERTICAL COLD-FORMED "Z" PROFILE.
- 06 COLORED STEEL JOINT FILLER BY CEMFORT.
- 07 FIXING SCREW BY CEMFORT.
- 08 CEMFORT FIBER-REINFORCED CONCRETE FACADE PANEL.



CEMFORT PANELS INC.  
 1915 RUE ALFRED-NOBEL  
 SALABERRY-DE-VALLEYFIELD  
 (QUEBEC) CANADA J6T 0E3

THE CEMFORT GUIDE DETAILS ARE PROVIDED FOR GENERAL REFERENCE ONLY AND REPRESENT TYPICAL CONDITIONS FOR CLADDING FASTENING SYSTEMS. PROJECT-SPECIFIC ENGINEERING WORK IS REQUIRED TO ACCOUNT FOR WIND LOAD, CLADDING WEIGHT, TYPE, PROJECTION, SPACING, ETC. PLEASE CONTACT CEMFORT FOR FURTHER INFORMATION. ALL IMPLIED WARRANTIES, INCLUDING THOSE RELATING TO FITNESS FOR A PARTICULAR PURPOSE, ARE EXPRESSLY EXCLUDED.

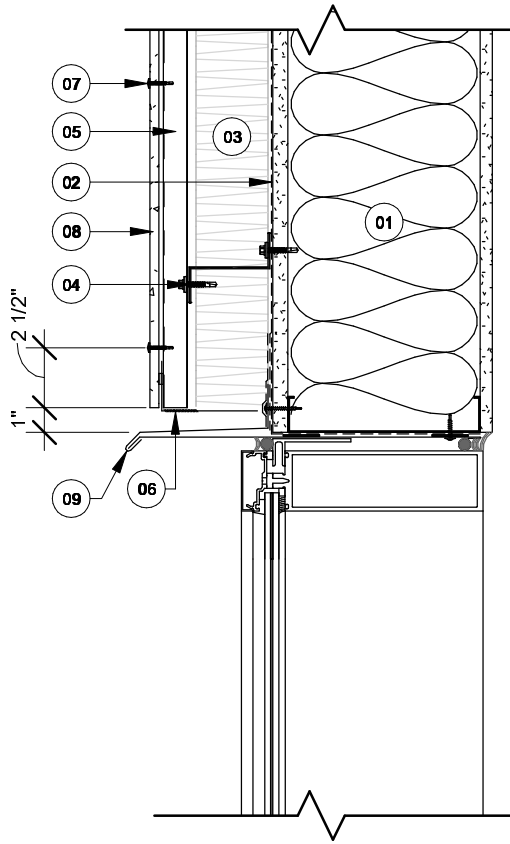
TITLE :  
 HORIZONTAL JOINT DETAIL

SYSTEM :  
 CEM-SCREW

DATE :  
 2024-10-24

SCALE :  
 1 1/2" = 1'-0"

PAGE :  
 6/9



**DRAWING CAPTION**

- 01 ASSEMBLY OF A STEEL HALF-TIMBERED WALL ACCORDING TO THE ARCHITECT.
- 02 WEATHER AND AIR BARRIER ACCORDING TO THE ARCHITECT.
- 03 MINERAL WOOL INSULATION, THICKNESS ACCORDING TO THE ARCHITECT.
- 04 STEEL PROFILE IN "Z", SIZE ACCORDING TO REQUIREMENTS.
- 05 VERTICAL COLD-FORMED "Z" PROFILE.
- 06 VENTILATION GRILLE.
- 07 FIXING SCREW BY CEMFORT.
- 08 CEMFORT FIBER-REINFORCED CONCRETE FACADE PANEL.
- 09 METAL FLASHING, BY THE INSTALLER.



CEMFORT PANELS INC.  
 1915 RUE ALFRED-NOBEL  
 SALABERRY-DE-VALLEYFIELD  
 (QUEBEC) CANADA J6T 0E3

THE CEMFORT GUIDE DETAILS ARE PROVIDED FOR GENERAL REFERENCE ONLY AND REPRESENT TYPICAL CONDITIONS FOR CLADDING FASTENING SYSTEMS. PROJECT-SPECIFIC ENGINEERING WORK IS REQUIRED TO ACCOUNT FOR WIND LOAD, CLADDING WEIGHT, TYPE, PROJECTION, SPACING, ETC. PLEASE CONTACT CEMFORT FOR FURTHER INFORMATION. ALL IMPLIED WARRANTIES, INCLUDING THOSE RELATING TO FITNESS FOR A PARTICULAR PURPOSE, ARE EXPRESSLY EXCLUDED.

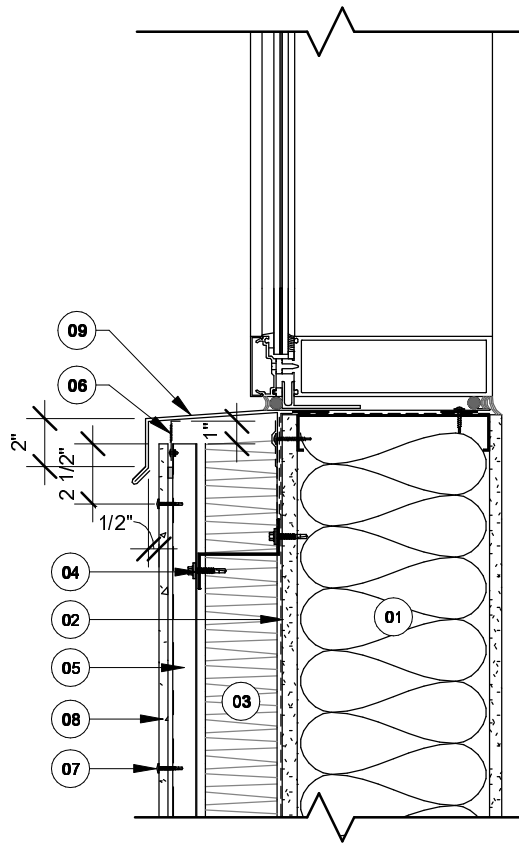
TITLE :  
 WINDOW HEAD DETAIL

SYSTEM :  
 CEM-SCREW

DATE :  
 2024-10-24

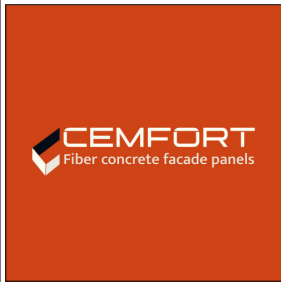
SCALE :  
 1 1/2" = 1'-0"

PAGE :  
 7/9



**DRAWING CAPTION**

- 01 ASSEMBLY OF A STEEL HALF-TIMBERED WALL ACCORDING TO THE ARCHITECT.
- 02 WEATHER AND AIR BARRIER ACCORDING TO THE ARCHITECT.
- 03 MINERAL WOOL INSULATION, THICKNESS ACCORDING TO THE ARCHITECT.
- 04 STEEL PROFILE IN "Z", SIZE ACCORDING TO REQUIREMENTS.
- 05 VERTICAL COLD-FORMED "Z" PROFILE.
- 06 VENTILATION GRILLE.
- 07 FIXING SCREW BY CEMFORT.
- 08 CEMFORT FIBER-REINFORCED CONCRETE FACADE PANEL.
- 09 METAL FLASHING, BY THE INSTALLER.



CEMFORT PANELS INC.  
 1915 RUE ALFRED-NOBEL  
 SALABERRY-DE-VALLEYFIELD  
 (QUEBEC) CANADA J6T 0E3

THE CEMFORT GUIDE DETAILS ARE PROVIDED FOR GENERAL REFERENCE ONLY AND REPRESENT TYPICAL CONDITIONS FOR CLADDING FASTENING SYSTEMS. PROJECT-SPECIFIC ENGINEERING WORK IS REQUIRED TO ACCOUNT FOR WIND LOAD, CLADDING WEIGHT, TYPE, PROJECTION, SPACING, ETC. PLEASE CONTACT CEMFORT FOR FURTHER INFORMATION. ALL IMPLIED WARRANTIES, INCLUDING THOSE RELATING TO FITNESS FOR A PARTICULAR PURPOSE, ARE EXPRESSLY EXCLUDED.

TITLE :  
 WINDOW STILL DETAIL

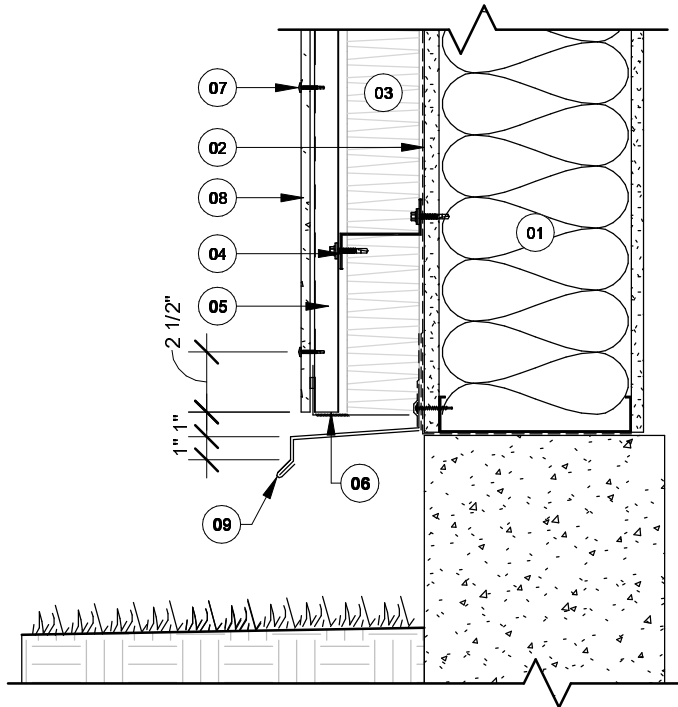
SYSTEM :  
 CEM-SCREW

DATE :  
 2024-10-24

SCALE :  
 1 1/2" = 1'-0"

PAGE :  
 8/9





### DRAWING CAPTION

- |  |  |
|--|--|
| <p><b>01</b> ASSEMBLY OF A STEEL HALF-TIMBERED WALL ACCORDING TO THE ARCHITECT.</p> <p><b>02</b> WEATHER AND AIR BARRIER ACCORDING TO THE ARCHITECT.</p> <p><b>03</b> MINERAL WOOL INSULATION, THICKNESS ACCORDING TO THE ARCHITECT.</p> <p><b>04</b> STEEL PROFILE IN "Z", SIZE ACCORDING TO REQUIREMENTS.</p> <p><b>05</b> VERTICAL COLD-FORMED "Z" PROFILE.</p> | <p><b>06</b> VENTILATION GRILLE.</p> <p><b>07</b> FIXING SCREW BY CEMFORT.</p> <p><b>08</b> CEMFORT FIBER-REINFORCED CONCRETE FACADE PANEL.</p> <p><b>09</b> METAL FLASHING, BY THE INSTALLER.</p> |
|--|--|



CEMFORT PANELS INC.  
 1915 RUE ALFRED-NOBEL  
 SALABERRY-DE-VALLEYFIELD  
 (QUEBEC) CANADA J6T 0E3

THE CEMFORT GUIDE DETAILS ARE PROVIDED FOR GENERAL REFERENCE ONLY AND REPRESENT TYPICAL CONDITIONS FOR CLADDING FASTENING SYSTEMS. PROJECT-SPECIFIC ENGINEERING WORK IS REQUIRED TO ACCOUNT FOR WIND LOAD, CLADDING WEIGHT, TYPE, PROJECTION, SPACING, ETC. PLEASE CONTACT CEMFORT FOR FURTHER INFORMATION. ALL IMPLIED WARRANTIES, INCLUDING THOSE RELATING TO FITNESS FOR A PARTICULAR PURPOSE, ARE EXPRESSLY EXCLUDED.

TITLE :  
 ABOVE-GRADE WALL DETAIL

SYSTEM :  
 CEM-SCREW

DATE :  
 2024-10-24

SCALE :  
 1 1/2" = 1'-0"

PAGE :  
 9/9