

DRAWING CAPTION

- | | |
|--|---|
| <p>01 ASSEMBLY OF A STEEL HALF-TIMBERED WALL ACCORDING TO THE ARCHITECT.</p> <p>02 WEATHER AND AIR BARRIER ACCORDING TO THE ARCHITECT.</p> <p>03 MINERAL WOOL INSULATION, THICKNESS ACCORDING TO THE ARCHITECT.</p> <p>04 STEEL PROFILE IN "Z", SIZE ACCORDING TO REQUIREMENTS.</p> <p>05 5" COLD-FORMED OMEGA PROFILE.</p> | <p>06 JOINT MOLDING 'CEM-LAP' BY CEMFORT.</p> <p>07 FIXING SCREW BY CEMFORT.</p> <p>08 NYLON SLEEVE BY CEMFORT.</p> <p>09 CEMFORT FIBER-REINFORCED CONCRETE FACADE PANEL.</p> |
|--|---|



CEMFORT PANELS INC.
 1915 RUE ALFRED-NOBEL
 SALABERRY-DE-VALLEYFIELD
 (QUEBEC) CANADA J6T 0E3

THE CEMFORT GUIDE DETAILS ARE PROVIDED FOR GENERAL REFERENCE ONLY AND REPRESENT TYPICAL CONDITIONS FOR CLADDING FASTENING SYSTEMS. PROJECT-SPECIFIC ENGINEERING WORK IS REQUIRED TO ACCOUNT FOR WIND LOAD, CLADDING WEIGHT, TYPE, PROJECTION, SPACING, ETC. PLEASE CONTACT CEMFORT FOR FURTHER INFORMATION. ALL IMPLIED WARRANTIES, INCLUDING THOSE RELATING TO FITNESS FOR A PARTICULAR PURPOSE, ARE EXPRESSLY EXCLUDED.

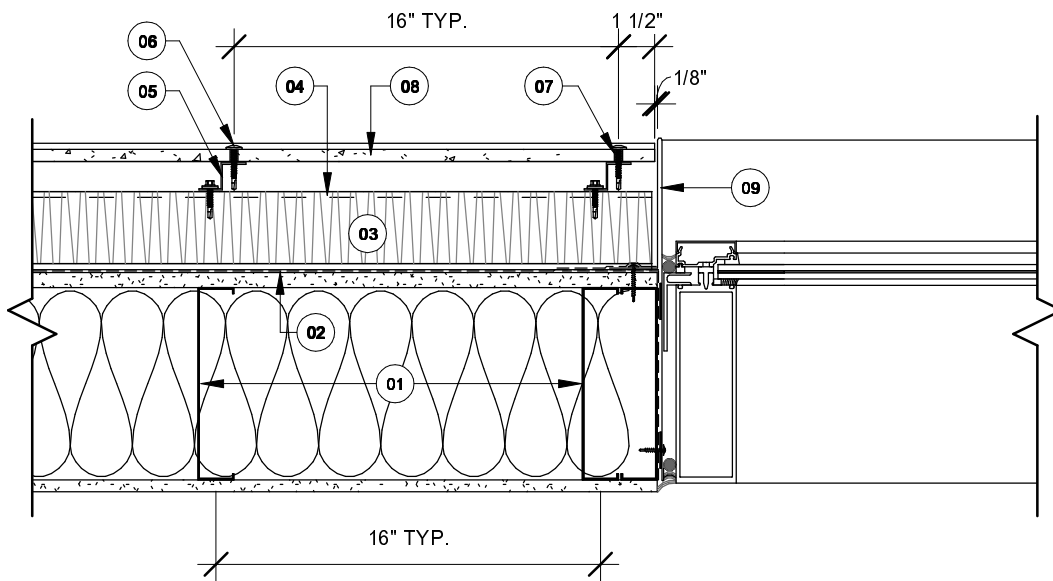
TITLE :
 PLAN DETAIL - STEEL FRAMED WALL

SYSTEM :
 CEM-LAP

DATE :
 2024-10-24

SCALE :
 1 1/2" = 1'-0"

PAGE :
 1/9



DRAWING CAPTION

- | | |
|---|--|
| <p>01 ASSEMBLY OF A STEEL HALF-TIMBERED WALL ACCORDING TO THE ARCHITECT.</p> <p>02 WEATHER AND AIR BARRIER ACCORDING TO THE ARCHITECT.</p> <p>03 MINERAL WOOL INSULATION, THICKNESS ACCORDING TO THE ARCHITECT.</p> <p>04 STEEL PROFILE IN "Z", SIZE ACCORDING TO REQUIREMENTS.</p> <p>05 COLD-FORMED "Z" PROFILE.</p> | <p>06 FIXING SCREW BY CEMFORT.</p> <p>07 NYLON SLEEVE BY CEMFORT.</p> <p>08 CEMFORT FIBER-REINFORCED CONCRETE FACADE PANEL.</p> <p>09 PRIED STEEL SHEET, BY THE INSTALLER.</p> |
|---|--|



CEMFORT PANELS INC.
 1915 RUE ALFRED-NOBEL
 SALABERRY-DE-VALLEYFIELD
 (QUEBEC) CANADA J6T 0E3

THE CEMFORT GUIDE DETAILS ARE PROVIDED FOR GENERAL REFERENCE ONLY AND REPRESENT TYPICAL CONDITIONS FOR CLADDING FASTENING SYSTEMS. PROJECT-SPECIFIC ENGINEERING WORK IS REQUIRED TO ACCOUNT FOR WIND LOAD, CLADDING WEIGHT, TYPE, PROJECTION, SPACING, ETC. PLEASE CONTACT CEMFORT FOR FURTHER INFORMATION. ALL IMPLIED WARRANTIES, INCLUDING THOSE RELATING TO FITNESS FOR A PARTICULAR PURPOSE, ARE EXPRESSLY EXCLUDED.

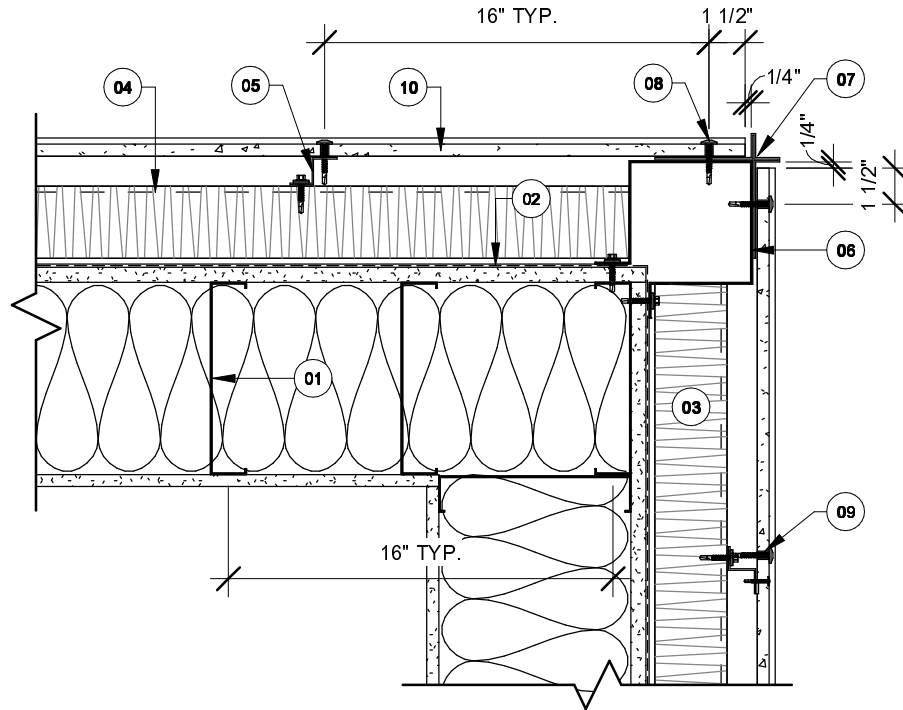
TITLE :
 PLAN DETAIL - WINDOW JAMB

SYSTEM :
 CEM-LAP

DATE :
 2024-10-24

SCALE :
 1 1/2" = 1'-0"

PAGE :
 2/9



DRAWING CAPTION

- | | |
|---|--|
| <p>01 ASSEMBLY OF A STEEL HALF-TIMBERED WALL ACCORDING TO THE ARCHITECT.</p> <p>02 WEATHER AND AIR BARRIER ACCORDING TO THE ARCHITECT.</p> <p>03 MINERAL WOOL INSULATION, THICKNESS ACCORDING TO THE ARCHITECT.</p> <p>04 STEEL PROFILE IN "Z", SIZE ACCORDING TO REQUIREMENTS.</p> <p>05 5" COLD-FORMED OMEGA PROFILE.</p> | <p>06 CORNER STEEL PROFILE, SIZE AS REQUIRED.</p> <p>07 CORNER MOLDING 'CEM-LAP' BY CEMFORT.</p> <p>08 FIXING SCREW BY CEMFORT.</p> <p>09 NYLON SLEEVE BY CEMFORT.</p> <p>10 CEMFORT FIBER-REINFORCED CONCRETE FACADE PANEL.</p> |
|---|--|



CEMFORT PANELS INC.
 1915 RUE ALFRED-NOBEL
 SALABERRY-DE-VALLEYFIELD
 (QUEBEC) CANADA J6T 0E3

THE CEMFORT GUIDE DETAILS ARE PROVIDED FOR GENERAL REFERENCE ONLY AND REPRESENT TYPICAL CONDITIONS FOR CLADDING FASTENING SYSTEMS. PROJECT-SPECIFIC ENGINEERING WORK IS REQUIRED TO ACCOUNT FOR WIND LOAD, CLADDING WEIGHT, TYPE, PROJECTION, SPACING, ETC. PLEASE CONTACT CEMFORT FOR FURTHER INFORMATION. ALL IMPLIED WARRANTIES, INCLUDING THOSE RELATING TO FITNESS FOR A PARTICULAR PURPOSE, ARE EXPRESSLY EXCLUDED.

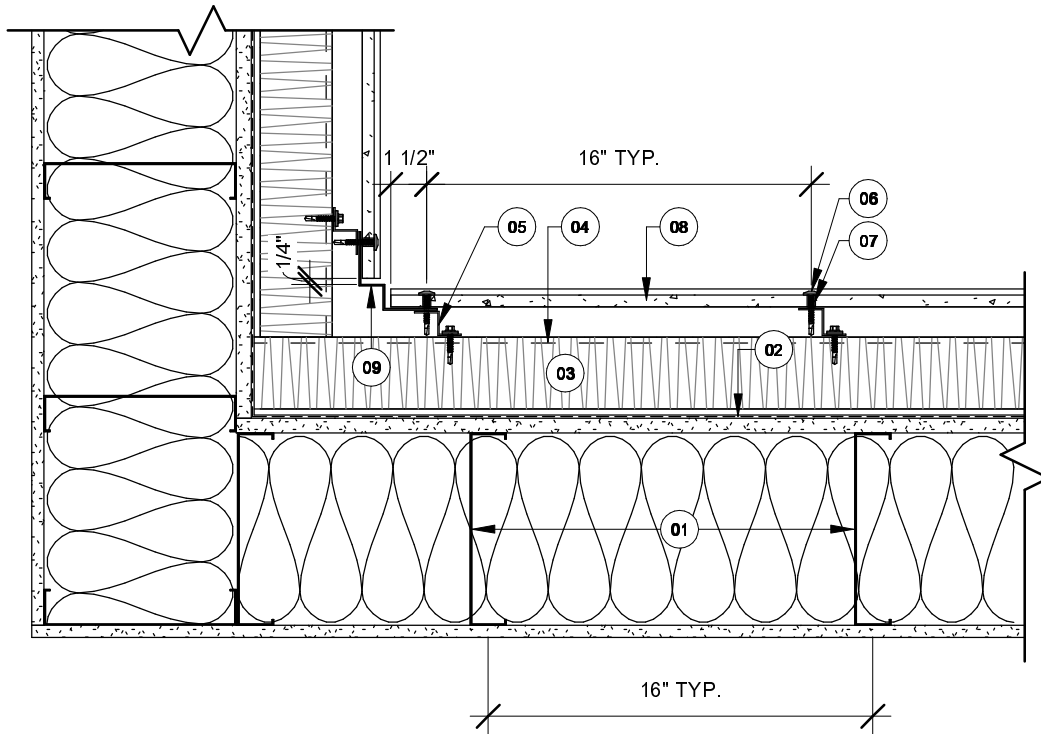
TITLE :
 PLAN DETAIL - EXTERNAL CORNER

SYSTEM :
 CEM-LAP

DATE :
 2024-10-24

SCALE :
 1 1/2" = 1'-0"

PAGE :
 3/9



DRAWING CAPTION

- | | |
|---|--|
| 01 ASSEMBLY OF A STEEL HALF-TIMBERED WALL ACCORDING TO THE ARCHITECT. | 06 FIXING SCREW BY CEMFORT. |
| 02 WEATHER AND AIR BARRIER ACCORDING TO THE ARCHITECT. | 07 NYLON SLEEVE BY CEMFORT. |
| 03 MINERAL WOOL INSULATION, THICKNESS ACCORDING TO THE ARCHITECT. | 08 CEMFORT FIBER-REINFORCED CONCRETE FACADE PANEL. |
| 04 STEEL PROFILE IN "Z", SIZE ACCORDING TO REQUIREMENTS. | 09 PRIED STEEL SHEET, BY THE INSTALLER. |
| 05 5" COLD-FORMED OMEGA PROFILE. | |



CEMFORT PANELS INC.
 1915 RUE ALFRED-NOBEL
 SALABERRY-DE-VALLEYFIELD
 (QUEBEC) CANADA J6T 0E3

THE CEMFORT GUIDE DETAILS ARE PROVIDED FOR GENERAL REFERENCE ONLY AND REPRESENT TYPICAL CONDITIONS FOR CLADDING FASTENING SYSTEMS. PROJECT-SPECIFIC ENGINEERING WORK IS REQUIRED TO ACCOUNT FOR WIND LOAD, CLADDING WEIGHT, TYPE, PROJECTION, SPACING, ETC. PLEASE CONTACT CEMFORT FOR FURTHER INFORMATION. ALL IMPLIED WARRANTIES, INCLUDING THOSE RELATING TO FITNESS FOR A PARTICULAR PURPOSE, ARE EXPRESSLY EXCLUDED.

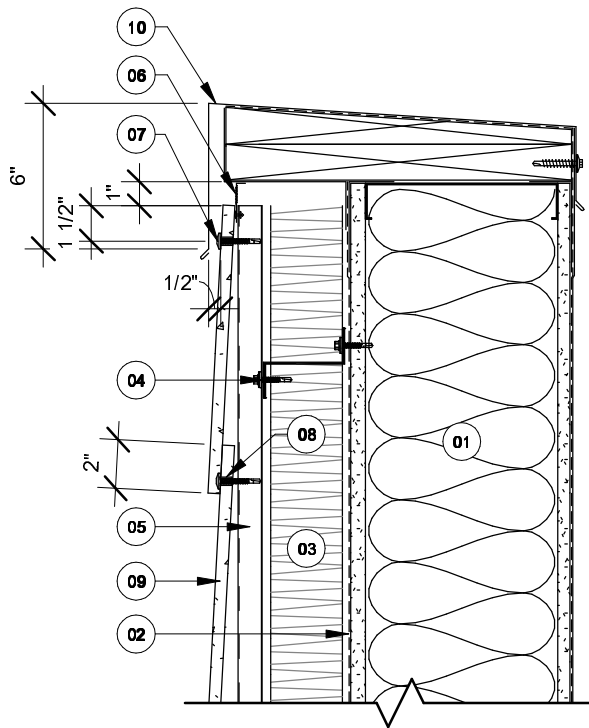
TITLE :
 PLAN DETAIL - INTERNAL CORNER

SYSTEM :
 CEM-LAP

DATE :
 2024-10-24

SCALE :
 1 1/2" = 1'-0"

PAGE :
 4/9



DRAWING CAPTION

- | | | | |
|----|--|----|---|
| 01 | ASSEMBLY OF A STEEL HALF-TIMBERED WALL ACCORDING TO THE ARCHITECT. | 06 | VENTILATION GRILLE. |
| 02 | WEATHER AND AIR BARRIER ACCORDING TO THE ARCHITECT. | 07 | FIXING SCREW BY CEMFORT. |
| 03 | MINERAL WOOL INSULATION, THICKNESS ACCORDING TO THE ARCHITECT. | 08 | NYLON SLEEVE BY CEMFORT. |
| 04 | STEEL PROFILE IN "Z", SIZE ACCORDING TO REQUIREMENTS. | 09 | CEMFORT FIBER-REINFORCED CONCRETE FACADE PANEL. |
| 05 | 5" COLD-FORMED OMEGA PROFILE. | 10 | METAL FLASHING, BY THE INSTALLER. |



CEMFORT PANELS INC.
1915 RUE ALFRED-NOBEL
SALABERRY-DE-VALLEYFIELD
(QUEBEC) CANADA J6T 0E3

THE CEMFORT GUIDE DETAILS ARE PROVIDED FOR GENERAL REFERENCE ONLY AND REPRESENT TYPICAL CONDITIONS FOR CLADDING FASTENING SYSTEMS. PROJECT-SPECIFIC ENGINEERING WORK IS REQUIRED TO ACCOUNT FOR WIND LOAD, CLADDING WEIGHT, TYPE, PROJECTION, SPACING, ETC. PLEASE CONTACT CEMFORT FOR FURTHER INFORMATION. ALL IMPLIED WARRANTIES, INCLUDING THOSE RELATING TO FITNESS FOR A PARTICULAR PURPOSE, ARE EXPRESSLY EXCLUDED.

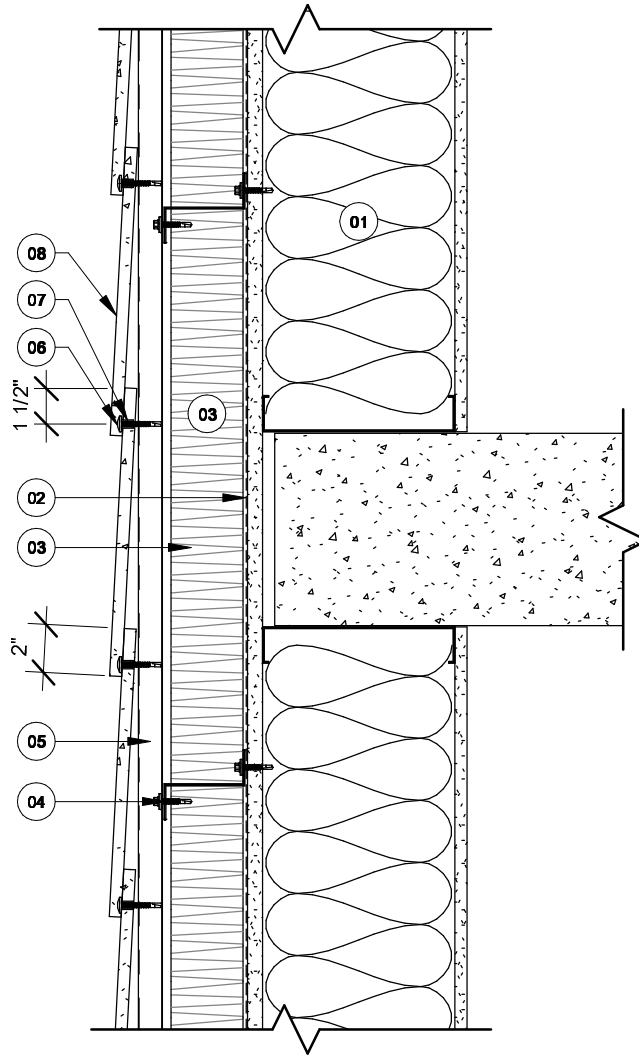
TITLE :
TYPICAL PARAPET DETAIL

SYSTEM :
CEM-LAP

DATE :
2024-10-24

SCALE :
1 1/2" = 1'-0"

PAGE :
5/9



DRAWING CAPTION

- | | |
|---|--|
| 01 ASSEMBLY OF A STEEL HALF-TIMBERED WALL ACCORDING TO THE ARCHITECT. | 06 FIXING SCREW BY CEMFORT. |
| 02 WEATHER AND AIR BARRIER ACCORDING TO THE ARCHITECT. | 07 NYLON SLEEVE BY CEMFORT. |
| 03 MINERAL WOOL INSULATION, THICKNESS ACCORDING TO THE ARCHITECT. | 08 CEMFORT FIBER-REINFORCED CONCRETE FACADE PANEL. |
| 04 STEEL PROFILE IN "Z", SIZE ACCORDING TO REQUIREMENTS. | |
| 05 5" COLD-FORMED OMEGA PROFILE. | |



CEMFORT PANELS INC.
 1915 RUE ALFRED-NOBEL
 SALABERRY-DE-VALLEYFIELD
 (QUEBEC) CANADA J6T 0E3

THE CEMFORT GUIDE DETAILS ARE PROVIDED FOR GENERAL REFERENCE ONLY AND REPRESENT TYPICAL CONDITIONS FOR CLADDING FASTENING SYSTEMS. PROJECT-SPECIFIC ENGINEERING WORK IS REQUIRED TO ACCOUNT FOR WIND LOAD, CLADDING WEIGHT, TYPE, PROJECTION, SPACING, ETC. PLEASE CONTACT CEMFORT FOR FURTHER INFORMATION. ALL IMPLIED WARRANTIES, INCLUDING THOSE RELATING TO FITNESS FOR A PARTICULAR PURPOSE, ARE EXPRESSLY EXCLUDED.

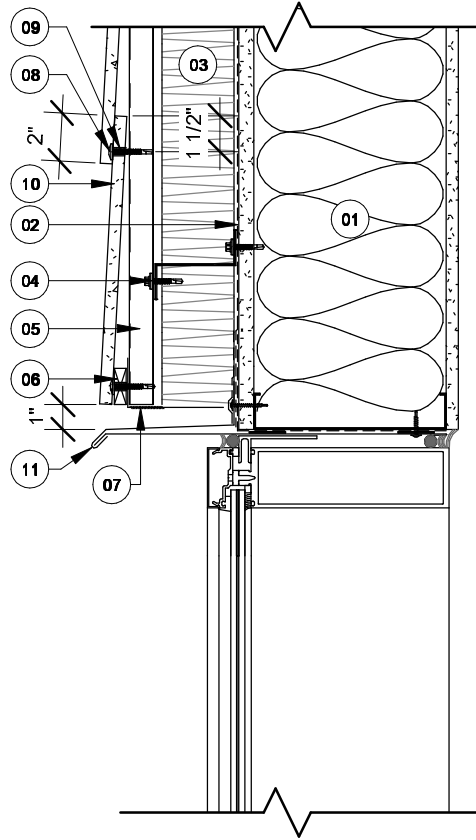
TITLE :
 HORIZONTAL JOINT DETAIL

SYSTEM :
 CEM-LAP

DATE :
 2024-10-24

SCALE :
 1 1/2" = 1'-0"

PAGE :
 6/9



DRAWING CAPTION

- | | |
|---|--|
| 01 ASSEMBLY OF A STEEL HALF-TIMBERED WALL ACCORDING TO THE ARCHITECT. | 07 VENTILATION GRILLE. |
| 02 WEATHER AND AIR BARRIER ACCORDING TO THE ARCHITECT. | 08 FIXING SCREW BY CEMFORT. |
| 03 MINERAL WOOL INSULATION, THICKNESS ACCORDING TO THE ARCHITECT. | 09 NYLON SLEEVE BY CEMFORT. |
| 04 STEEL PROFILE IN "Z", SIZE ACCORDING TO REQUIREMENTS. | 10 CEMFORT FIBER-REINFORCED CONCRETE FACADE PANEL. |
| 05 COLD-FORMED "Z" PROFILE. | 11 METAL FLASHING, BY THE INSTALLER. |
| 06 STARTER MOLDING BY CEMFORT. | |



CEMFORT PANELS INC.
1915 RUE ALFRED-NOBEL
SALABERRY-DE-VALLEYFIELD
(QUEBEC) CANADA J6T 0E3

THE CEMFORT GUIDE DETAILS ARE PROVIDED FOR GENERAL REFERENCE ONLY AND REPRESENT TYPICAL CONDITIONS FOR CLADDING FASTENING SYSTEMS. PROJECT-SPECIFIC ENGINEERING WORK IS REQUIRED TO ACCOUNT FOR WIND LOAD, CLADDING WEIGHT, TYPE, PROJECTION, SPACING, ETC. PLEASE CONTACT CEMFORT FOR FURTHER INFORMATION. ALL IMPLIED WARRANTIES, INCLUDING THOSE RELATING TO FITNESS FOR A PARTICULAR PURPOSE, ARE EXPRESSLY EXCLUDED.

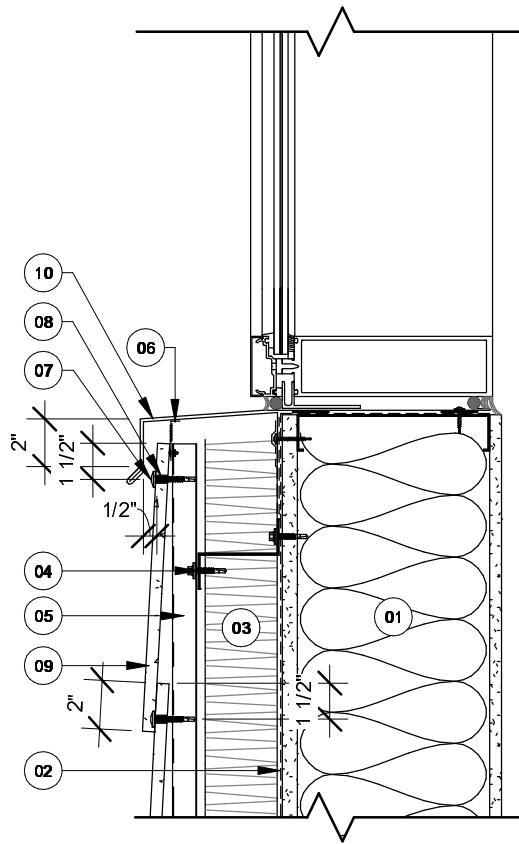
TITLE :
WINDOW HEAD DETAIL

SYSTEM :
CEM-LAP

DATE :
2024-10-24

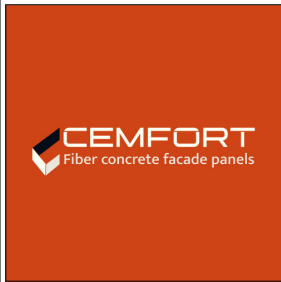
SCALE :
1 1/2" = 1'-0"

PAGE :
7/9



DRAWING CAPTION

- 01 ASSEMBLY OF A STEEL HALF-TIMBERED WALL ACCORDING TO THE ARCHITECT.
- 02 WEATHER AND AIR BARRIER ACCORDING TO THE ARCHITECT.
- 03 MINERAL WOOL INSULATION, THICKNESS ACCORDING TO THE ARCHITECT.
- 04 STEEL PROFILE IN "Z", SIZE ACCORDING TO REQUIREMENTS.
- 05 5" COLD-FORMED OMEGA PROFILE.
- 06 VENTILATION GRILLE.
- 07 FIXING SCREW BY CEMFORT.
- 08 NYLON SLEEVE BY CEMFORT.
- 09 CEMFORT FIBER-REINFORCED CONCRETE FACADE PANEL.
- 10 METAL FLASHING, BY THE INSTALLER.



CEMFORT PANELS INC.
 1915 RUE ALFRED-NOBEL
 SALABERRY-DE-VALLEYFIELD
 (QUEBEC) CANADA J6T 0E3

THE CEMFORT GUIDE DETAILS ARE PROVIDED FOR GENERAL REFERENCE ONLY AND REPRESENT TYPICAL CONDITIONS FOR CLADDING FASTENING SYSTEMS. PROJECT-SPECIFIC ENGINEERING WORK IS REQUIRED TO ACCOUNT FOR WIND LOAD, CLADDING WEIGHT, TYPE, PROJECTION, SPACING, ETC. PLEASE CONTACT CEMFORT FOR FURTHER INFORMATION. ALL IMPLIED WARRANTIES, INCLUDING THOSE RELATING TO FITNESS FOR A PARTICULAR PURPOSE, ARE EXPRESSLY EXCLUDED.

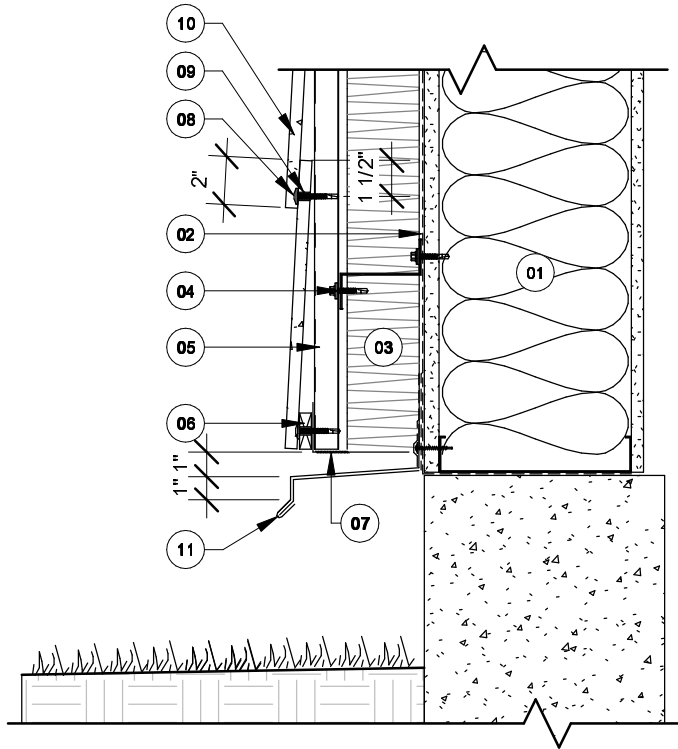
TITLE :
 WINDOW STILL DETAIL

SYSTEM :
 CEM-LAP

DATE :
 2024-10-24

SCALE :
 1 1/2" = 1'-0"

PAGE :
 8/9



DRAWING CAPTION

- 01 ASSEMBLY OF A STEEL HALF-TIMBERED WALL ACCORDING TO THE ARCHITECT.
- 02 WEATHER AND AIR BARRIER ACCORDING TO THE ARCHITECT.
- 03 MINERAL WOOL INSULATION, THICKNESS ACCORDING TO THE ARCHITECT.
- 04 STEEL PROFILE IN "Z", SIZE ACCORDING TO REQUIREMENTS.
- 05 COLD-FORMED "Z" PROFILE.
- 06 STARTER MOLDING BY CEMFORT.
- 07 VENTILATION GRILLE.
- 08 FIXING SCREW BY CEMFORT.
- 09 NYLON SLEEVE BY CEMFORT.
- 10 CEMFORT FIBER-REINFORCED CONCRETE FACADE PANEL.
- 11 METAL FLASHING, BY THE INSTALLER.



CEMFORT PANELS INC.
 1915 RUE ALFRED-NOBEL
 SALABERRY-DE-VALLEYFIELD
 (QUEBEC) CANADA J6T 0E3

THE CEMFORT GUIDE DETAILS ARE PROVIDED FOR GENERAL REFERENCE ONLY AND REPRESENT TYPICAL CONDITIONS FOR CLADDING FASTENING SYSTEMS. PROJECT-SPECIFIC ENGINEERING WORK IS REQUIRED TO ACCOUNT FOR WIND LOAD, CLADDING WEIGHT, TYPE, PROJECTION, SPACING, ETC. PLEASE CONTACT CEMFORT FOR FURTHER INFORMATION. ALL IMPLIED WARRANTIES, INCLUDING THOSE RELATING TO FITNESS FOR A PARTICULAR PURPOSE, ARE EXPRESSLY EXCLUDED.

TITLE :
 ABOVE-GRADE WALL DETAIL

SYSTEM :
 CEM-LAP

DATE :
 2024-10-24

SCALE :
 1 1/2" = 1'-0"

PAGE :
 9/9