

### DRAWING CAPTION

- |   |  |
|---|--|
| <p>01 ASSEMBLY OF A STEEL HALF-TIMBERED WALL ACCORDING TO THE ARCHITECT.</p> <p>02 WEATHER AND AIR BARRIER ACCORDING TO THE ARCHITECT.</p> <p>03 MINERAL WOOL INSULATION, THICKNESS ACCORDING TO THE ARCHITECT.</p> <p>04 STEEL PROFILE IN "Z", SIZE ACCORDING TO REQUIREMENTS.</p> <p>05 HORIZONTAL SUSPENSION PROFILE 'CEM-CORE' BY CEMFORT.</p> <p>06 CEM-CORE SUSPENSION CLIP WITH ANCHOR FIXED TO THE PANEL.</p> | <p>07 FIXING SCREWS 5,5 MM X 50 MM BY CEMFORT.</p> <p>08 ADJUSTMENT SCREW FOR PANEL LEVELING BY CEMFORT.</p> <p>09 OPEN EXPANSION JOINT, 1/4".</p> <p>10 CONTINUOUS AIR GAP, MINIMUM 3/4".</p> <p>11 CEMFORT FIBER-REINFORCED CONCRETE FACADE PANEL.</p> |
|---|--|



CEMFORT PANELS INC.  
 1915 RUE ALFRED-NOBEL  
 SALABERRY-DE-VALLEYFIELD  
 (QUEBEC) CANADA J6T 0E3

THE CEMFORT GUIDE DETAILS ARE PROVIDED FOR GENERAL REFERENCE ONLY AND REPRESENT TYPICAL CONDITIONS FOR CLADDING FASTENING SYSTEMS. PROJECT-SPECIFIC ENGINEERING WORK IS REQUIRED TO ACCOUNT FOR WIND LOAD, CLADDING WEIGHT, TYPE, PROJECTION, SPACING, ETC. PLEASE CONTACT CEMFORT FOR FURTHER INFORMATION. ALL IMPLIED WARRANTIES, INCLUDING THOSE RELATING TO FITNESS FOR A PARTICULAR PURPOSE, ARE EXPRESSLY EXCLUDED.

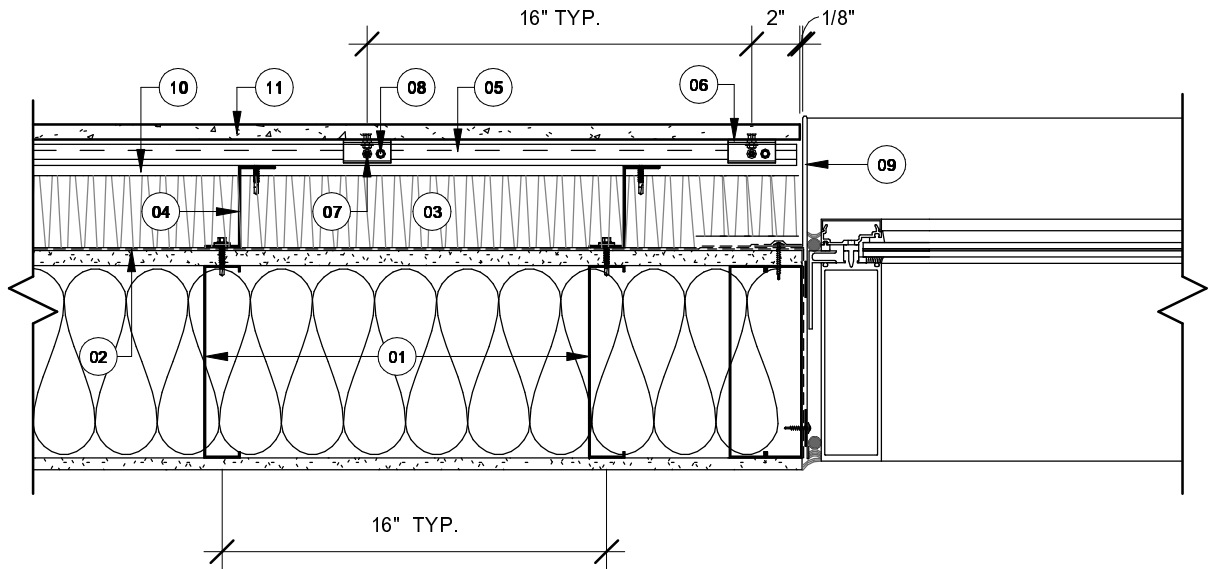
TITLE :  
 PLAN DETAIL - STEEL FRAMED WALL

SYSTEM :  
 CEM-CORE

DATE :  
 2024-10-24

SCALE :  
 1 1/2" = 1'-0"

PAGE :  
 1/9



### DRAWING CAPTION

- |   |   |
|---|---|
| <p>01 ASSEMBLY OF A STEEL HALF-TIMBERED WALL ACCORDING TO THE ARCHITECT.</p> <p>02 WEATHER AND AIR BARRIER ACCORDING TO THE ARCHITECT.</p> <p>03 MINERAL WOOL INSULATION, THICKNESS ACCORDING TO THE ARCHITECT.</p> <p>04 STEEL PROFILE IN 'Z', SIZE ACCORDING TO REQUIREMENTS.</p> <p>05 HORIZONTAL SUSPENSION PROFILE 'CEM-CORE' BY CEMFORT.</p> <p>06 CEM-CORE SUSPENSION CLIP WITH ANCHOR FIXED TO THE PANEL.</p> | <p>07 FIXING SCREWS 5,5 MM X 50 MM BY CEMFORT.</p> <p>08 ADJUSTMENT SCREW FOR PANEL LEVELING BY CEMFORT.</p> <p>09 PRE-BENT STEEL SHEET, BY THE INSTALLER.</p> <p>10 CONTINUOUS AIR GAP, MINIMUM 3/4\".</p> <p>11 CEMFORT FIBER-REINFORCED CONCRETE FACADE PANEL.</p> |
|---|---|



CEMFORT PANELS INC.  
1915 RUE ALFRED-NOBEL  
SALABERRY-DE-VALLEYFIELD  
(QUEBEC) CANADA J6T 0E3

THE CEMFORT GUIDE DETAILS ARE PROVIDED FOR GENERAL REFERENCE ONLY AND REPRESENT TYPICAL CONDITIONS FOR CLADDING FASTENING SYSTEMS. PROJECT-SPECIFIC ENGINEERING WORK IS REQUIRED TO ACCOUNT FOR WIND LOAD, CLADDING WEIGHT, TYPE, PROJECTION, SPACING, ETC. PLEASE CONTACT CEMFORT FOR FURTHER INFORMATION. ALL IMPLIED WARRANTIES, INCLUDING THOSE RELATING TO FITNESS FOR A PARTICULAR PURPOSE, ARE EXPRESSLY EXCLUDED.

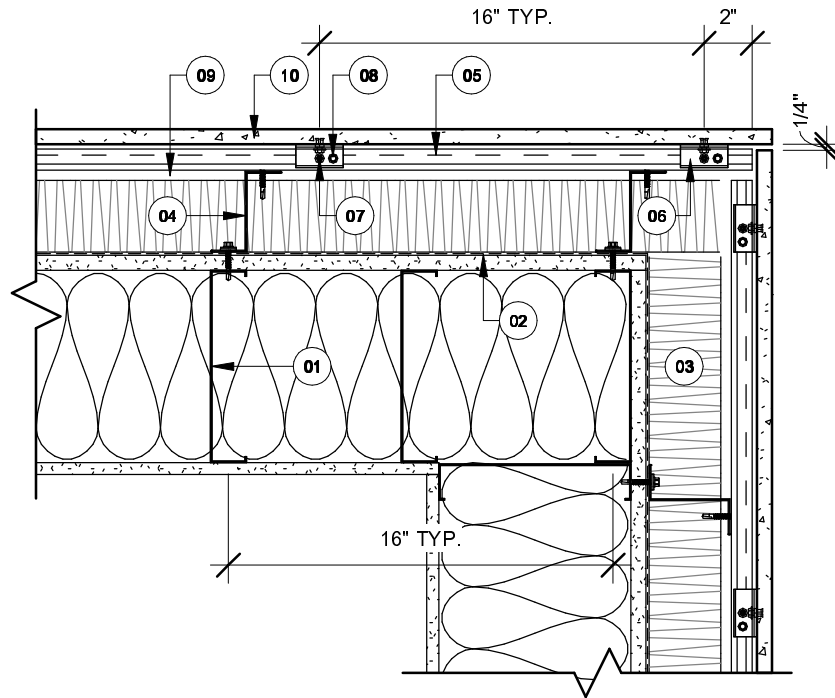
TITLE :  
PLAN DETAIL - WINDOW JAMB

SYSTEM :  
CEM-CORE

DATE :  
2024-10-24

SCALE :  
1 1/2" = 1'-0"

PAGE :  
2/9



### DRAWING CAPTION

- |  |   |
|--|---|
| <p>01 ASSEMBLY OF A STEEL HALF-TIMBERED WALL ACCORDING TO THE ARCHITECT.</p> <p>02 WEATHER AND AIR BARRIER ACCORDING TO THE ARCHITECT.</p> <p>03 MINERAL WOOL INSULATION, THICKNESS ACCORDING TO THE ARCHITECT.</p> <p>04 STEEL PROFILE IN "Z", SIZE ACCORDING TO REQUIREMENTS.</p> <p>05 HORIZONTAL SUSPENSION PROFILE 'CEM-CORE' BY CEMFORT.</p> | <p>06 CEM-CORE SUSPENSION CLIP WITH ANCHOR FIXED TO THE PANEL.</p> <p>07 FIXING SCREWS 5,5 MM X 50 MM BY CEMFORT.</p> <p>08 ADJUSTMENT SCREW FOR PANEL LEVELING BY CEMFORT.</p> <p>09 CONTINUOUS AIR GAP, MINIMUM 3/4".</p> <p>10 CEMFORT FIBER-REINFORCED CONCRETE FACADE PANEL.</p> |
|--|---|



CEMFORT PANELS INC.  
 1915 RUE ALFRED-NOBEL  
 SALABERRY-DE-VALLEYFIELD  
 (QUEBEC) CANADA J6T 0E3

THE CEMFORT GUIDE DETAILS ARE PROVIDED FOR GENERAL REFERENCE ONLY AND REPRESENT TYPICAL CONDITIONS FOR CLADDING FASTENING SYSTEMS. PROJECT-SPECIFIC ENGINEERING WORK IS REQUIRED TO ACCOUNT FOR WIND LOAD, CLADDING WEIGHT, TYPE, PROJECTION, SPACING, ETC. PLEASE CONTACT CEMFORT FOR FURTHER INFORMATION. ALL IMPLIED WARRANTIES, INCLUDING THOSE RELATING TO FITNESS FOR A PARTICULAR PURPOSE, ARE EXPRESSLY EXCLUDED.

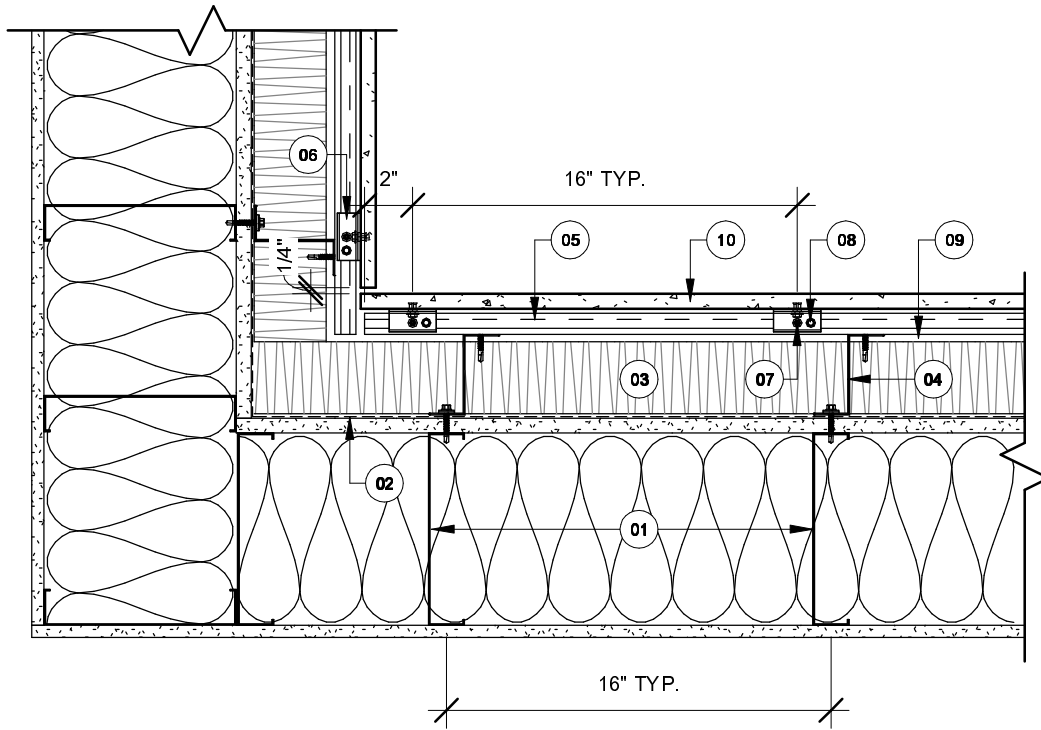
TITLE :  
 PLAN DETAIL - EXTERNAL CORNER

SYSTEM :  
 CEM-CORE

DATE :  
 2024-10-24

SCALE :  
 1 1/2" = 1'-0"

PAGE :  
 3/9



**DRAWING CAPTION**

- 01** ASSEMBLY OF A STEEL HALF-TIMBERED WALL ACCORDING TO THE ARCHITECT.
- 02** WEATHER AND AIR BARRIER ACCORDING TO THE ARCHITECT.
- 03** MINERAL WOOL INSULATION, THICKNESS ACCORDING TO THE ARCHITECT.
- 04** STEEL PROFILE IN "Z", SIZE ACCORDING TO REQUIREMENTS.
- 05** CEM-CORE SUSPENSION CLIP WITH ANCHOR FIXED TO THE PANEL.
- 06** CEM-CORE SUSPENSION CLIP WITH ANCHOR FIXED TO THE PANEL.
- 07** FIXING SCREWS 5,5 MM X 50 MM BY CEMFORT.
- 08** ADJUSTMENT SCREW FOR PANEL LEVELING BY CEMFORT.
- 09** CONTINUOUS AIR GAP, MINIMUM 3/4".
- 10** CEMFORT FIBER-REINFORCED CONCRETE FACADE PANEL.



CEMFORT PANELS INC.  
 1915 RUE ALFRED-NOBEL  
 SALABERRY-DE-VALLEYFIELD  
 (QUEBEC) CANADA J6T 0E3

THE CEMFORT GUIDE DETAILS ARE PROVIDED FOR GENERAL REFERENCE ONLY AND REPRESENT TYPICAL CONDITIONS FOR CLADDING FASTENING SYSTEMS. PROJECT-SPECIFIC ENGINEERING WORK IS REQUIRED TO ACCOUNT FOR WIND LOAD, CLADDING WEIGHT, TYPE, PROJECTION, SPACING, ETC. PLEASE CONTACT CEMFORT FOR FURTHER INFORMATION. ALL IMPLIED WARRANTIES, INCLUDING THOSE RELATING TO FITNESS FOR A PARTICULAR PURPOSE, ARE EXPRESSLY EXCLUDED.

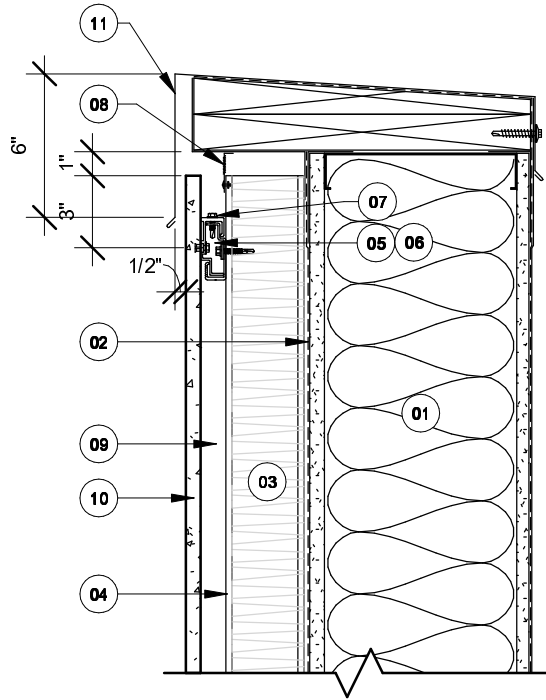
TITLE :  
 PLAN DETAIL - INTERNAL CORNER

SYSTEM :  
 CEM-CORE

DATE :  
 2024-10-24

SCALE :  
 1 1/2" = 1'-0"

PAGE :  
 4/9



### DRAWING CAPTION

- |   |  |
|---|--|
| <p><b>01</b> ASSEMBLY OF A STEEL HALF-TIMBERED WALL ACCORDING TO THE ARCHITECT.</p> <p><b>02</b> WEATHER AND AIR BARRIER ACCORDING TO THE ARCHITECT.</p> <p><b>03</b> MINERAL WOOL INSULATION, THICKNESS ACCORDING TO THE ARCHITECT.</p> <p><b>04</b> STEEL PROFILE IN "Z", SIZE ACCORDING TO REQUIREMENTS.</p> <p><b>05</b> HORIZONTAL SUSPENSION PROFILE 'CEM-CORE' BY CEMFORT.</p> <p><b>06</b> CEM-CORE SUSPENSION CLIP WITH ANCHOR FIXED TO THE PANEL.</p> | <p><b>07</b> FIXING SCREWS 5,5 MM X 50 MM BY CEMFORT.</p> <p><b>08</b> VENTILATION GRILLE .</p> <p><b>09</b> CONTINUOUS AIR GAP, MINIMUM 3/4".</p> <p><b>10</b> CEMFORT FIBER-REINFORCED CONCRETE FACADE PANEL.</p> <p><b>11</b> METAL FLASHING, BY THE INSTALLER.</p> |
|---|--|



CEMFORT PANELS INC.  
 1915 RUE ALFRED-NOBEL  
 SALABERRY-DE-VALLEYFIELD  
 (QUEBEC) CANADA J6T 0E3

THE CEMFORT GUIDE DETAILS ARE PROVIDED FOR GENERAL REFERENCE ONLY AND REPRESENT TYPICAL CONDITIONS FOR CLADDING FASTENING SYSTEMS. PROJECT-SPECIFIC ENGINEERING WORK IS REQUIRED TO ACCOUNT FOR WIND LOAD, CLADDING WEIGHT, TYPE, PROJECTION, SPACING, ETC. PLEASE CONTACT CEMFORT FOR FURTHER INFORMATION. ALL IMPLIED WARRANTIES, INCLUDING THOSE RELATING TO FITNESS FOR A PARTICULAR PURPOSE, ARE EXPRESSLY EXCLUDED.

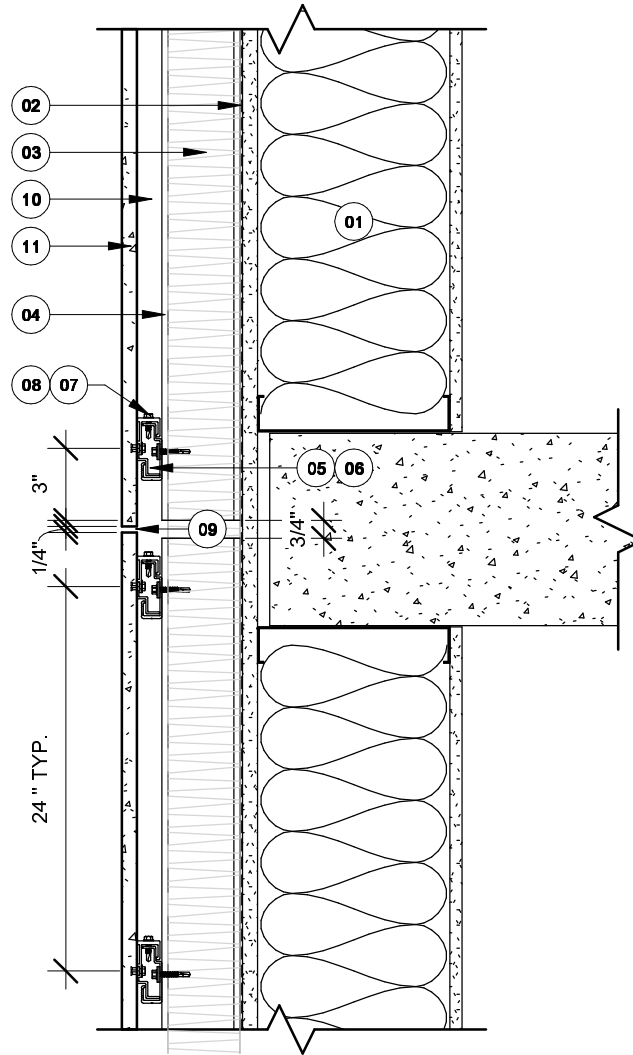
TITLE :  
 TYPICAL PARAPET DETAIL

SYSTEM :  
 CEM-CORE

DATE :  
 2024-10-24

SCALE :  
 1 1/2" = 1'-0"

PAGE :  
 5/9



### DRAWING CAPTION

- |   |  |
|---|--|
| 01 ASSEMBLY OF A STEEL HALF-TIMBERED WALL ACCORDING TO THE ARCHITECT. | 07 FIXING SCREWS 5,5 MM X 50 MM BY CEMFORT.        |
| 02 WEATHER AND AIR BARRIER ACCORDING TO THE ARCHITECT.                | 08 ADJUSTMENT SCREW FOR PANEL LEVELING BY CEMFORT. |
| 03 MINERAL WOOL INSULATION, THICKNESS ACCORDING TO THE ARCHITECT.     | 09 OPEN EXPANSION JOINT, 1/4".                     |
| 04 STEEL PROFILE IN "Z", SIZE ACCORDING TO REQUIREMENTS.              | 10 CONTINUOUS AIR GAP, MINIMUM 3/4".               |
| 05 HORIZONTAL SUSPENSION PROFILE 'CEM-CORE' BY CEMFORT.               | 11 CEMFORT FIBER-REINFORCED CONCRETE FACADE PANEL. |
| 06 CEM-CORE SUSPENSION CLIP WITH ANCHOR FIXED TO THE PANEL.           |  |



CEMFORT PANELS INC.  
 1915 RUE ALFRED-NOBEL  
 SALABERRY-DE-VALLEYFIELD  
 (QUEBEC) CANADA J6T 0E3

THE CEMFORT GUIDE DETAILS ARE PROVIDED FOR GENERAL REFERENCE ONLY AND REPRESENT TYPICAL CONDITIONS FOR CLADDING FASTENING SYSTEMS. PROJECT-SPECIFIC ENGINEERING WORK IS REQUIRED TO ACCOUNT FOR WIND LOAD, CLADDING WEIGHT, TYPE, PROJECTION, SPACING, ETC. PLEASE CONTACT CEMFORT FOR FURTHER INFORMATION. ALL IMPLIED WARRANTIES, INCLUDING THOSE RELATING TO FITNESS FOR A PARTICULAR PURPOSE, ARE EXPRESSLY EXCLUDED.

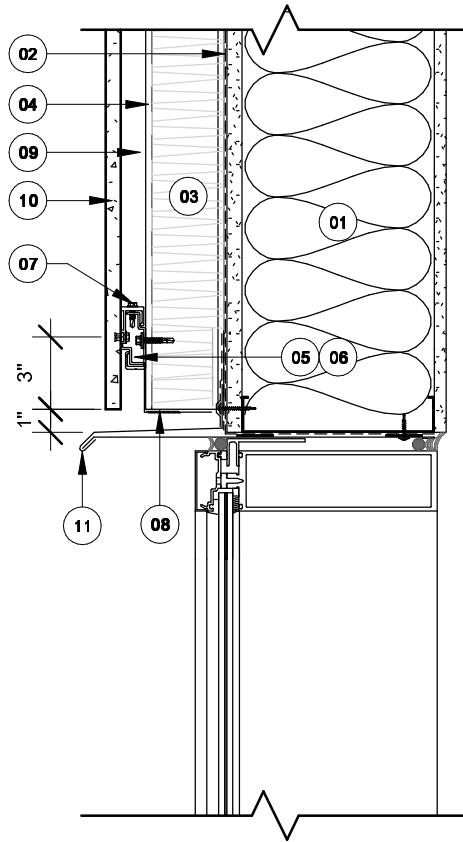
TITLE :  
 HORIZONTAL JOINT DETAIL

SYSTEM :  
 CEM-CORE

DATE :  
 2024-10-24

SCALE :  
 1 1/2" = 1'-0"

PAGE :  
 6/9



### DRAWING CAPTION

- |   |  |
|---|--|
| 01 ASSEMBLY OF A STEEL HALF-TIMBERED WALL ACCORDING TO THE ARCHITECT. | 07 FIXING SCREWS 5,5 MM X 50 MM BY CEMFORT.        |
| 02 WEATHER AND AIR BARRIER ACCORDING TO THE ARCHITECT.                | 08 VENTILATION GRILLE .                            |
| 03 MINERAL WOOL INSULATION, THICKNESS ACCORDING TO THE ARCHITECT.     | 09 CONTINUOUS AIR GAP, MINIMUM 3/4".               |
| 04 STEEL PROFILE IN "Z", SIZE ACCORDING TO REQUIREMENTS.              | 10 CEMFORT FIBER-REINFORCED CONCRETE FACADE PANEL. |
| 05 HORIZONTAL SUSPENSION PROFILE 'CEM-CORE' BY CEMFORT.               | 11 METAL FLASHING, BY THE INSTALLER.               |
| 06 CEM-CORE SUSPENSION CLIP WITH ANCHOR FIXED TO THE PANEL.           |  |



CEMFORT PANELS INC.  
1915 RUE ALFRED-NOBEL  
SALABERRY-DE-VALLEYFIELD  
(QUEBEC) CANADA J6T 0E3

THE CEMFORT GUIDE DETAILS ARE PROVIDED FOR GENERAL REFERENCE ONLY AND REPRESENT TYPICAL CONDITIONS FOR CLADDING FASTENING SYSTEMS. PROJECT-SPECIFIC ENGINEERING WORK IS REQUIRED TO ACCOUNT FOR WIND LOAD, CLADDING WEIGHT, TYPE, PROJECTION, SPACING, ETC. PLEASE CONTACT CEMFORT FOR FURTHER INFORMATION. ALL IMPLIED WARRANTIES, INCLUDING THOSE RELATING TO FITNESS FOR A PARTICULAR PURPOSE, ARE EXPRESSLY EXCLUDED.

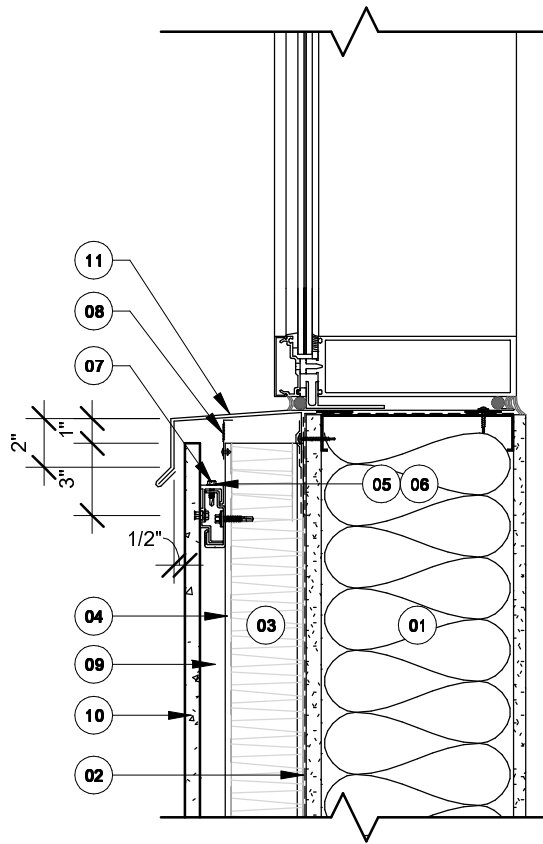
TITLE :  
WINDOW HEAD DETAIL

SYSTEM :  
CEM-CORE

DATE :  
2024-10-24

SCALE :  
1 1/2" = 1'-0"

PAGE :  
7/9



### DRAWING CAPTION

- |   |  |
|---|--|
| 01 ASSEMBLY OF A STEEL HALF-TIMBERED WALL ACCORDING TO THE ARCHITECT. | 07 FIXING SCREWS 5,5 MM X 50 MM BY CEMFORT.        |
| 02 WEATHER AND AIR BARRIER ACCORDING TO THE ARCHITECT.                | 08 VENTILATION GRILLE .                            |
| 03 MINERAL WOOL INSULATION, THICKNESS ACCORDING TO THE ARCHITECT.     | 09 CONTINUOUS AIR GAP, MINIMUM 3/4".               |
| 04 STEEL PROFILE IN "Z", SIZE ACCORDING TO REQUIREMENTS.              | 10 CEMFORT FIBER-REINFORCED CONCRETE FACADE PANEL. |
| 05 HORIZONTAL SUSPENSION PROFILE 'CEM-CORE' BY CEMFORT.               | 11 METAL FLASHING, BY THE INSTALLER.               |
| 06 CEM-CORE SUSPENSION CLIP WITH ANCHOR FIXED TO THE PANEL.           |  |



CEMFORT PANELS INC.  
1915 RUE ALFRED-NOBEL  
SALABERRY-DE-VALLEYFIELD  
(QUEBEC) CANADA J6T 0E3

THE CEMFORT GUIDE DETAILS ARE PROVIDED FOR GENERAL REFERENCE ONLY AND REPRESENT TYPICAL CONDITIONS FOR CLADDING FASTENING SYSTEMS. PROJECT-SPECIFIC ENGINEERING WORK IS REQUIRED TO ACCOUNT FOR WIND LOAD, CLADDING WEIGHT, TYPE, PROJECTION, SPACING, ETC. PLEASE CONTACT CEMFORT FOR FURTHER INFORMATION. ALL IMPLIED WARRANTIES, INCLUDING THOSE RELATING TO FITNESS FOR A PARTICULAR PURPOSE, ARE EXPRESSLY EXCLUDED.

TITLE :  
WINDOW STILL DETAIL

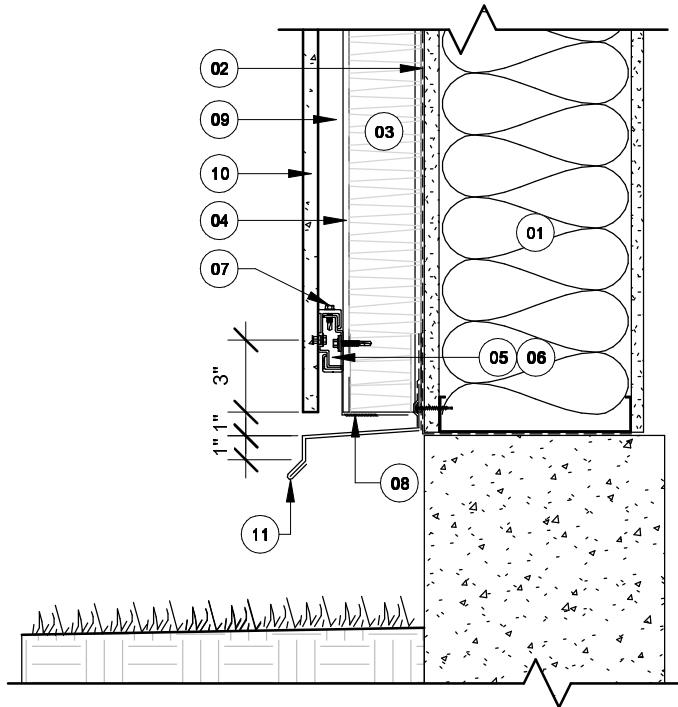
SYSTEM :  
CEM-CORE

DATE :  
2024-10-24

SCALE :  
1 1/2" = 1'-0"

PAGE :  
8/9





### DRAWING CAPTION

- |   |  |
|---|--|
| 01 ASSEMBLY OF A STEEL HALF-TIMBERED WALL ACCORDING TO THE ARCHITECT. | 07 FIXING SCREWS 5,5 MM X 50 MM BY CEMFORT.        |
| 02 WEATHER AND AIR BARRIER ACCORDING TO THE ARCHITECT.                | 08 VENTILATION GRILLE .                            |
| 03 MINERAL WOOL INSULATION, THICKNESS ACCORDING TO THE ARCHITECT.     | 09 CONTINUOUS AIR GAP, MINIMUM 3/4".               |
| 04 STEEL PROFILE IN "Z", SIZE ACCORDING TO REQUIREMENTS.              | 10 CEMFORT FIBER-REINFORCED CONCRETE FACADE PANEL. |
| 05 HORIZONTAL SUSPENSION PROFILE 'CEM-CORE' BY CEMFORT.               | 11 METAL FLASHING, BY THE INSTALLER.               |
| 06 CEM-CORE SUSPENSION CLIP WITH ANCHOR FIXED TO THE PANEL.           |  |



CEMFORT PANELS INC.  
 1915 RUE ALFRED-NOBEL  
 SALABERRY-DE-VALLEYFIELD  
 (QUEBEC) CANADA J6T 0E3

THE CEMFORT GUIDE DETAILS ARE PROVIDED FOR GENERAL REFERENCE ONLY AND REPRESENT TYPICAL CONDITIONS FOR CLADDING FASTENING SYSTEMS. PROJECT-SPECIFIC ENGINEERING WORK IS REQUIRED TO ACCOUNT FOR WIND LOAD, CLADDING WEIGHT, TYPE, PROJECTION, SPACING, ETC. PLEASE CONTACT CEMFORT FOR FURTHER INFORMATION. ALL IMPLIED WARRANTIES, INCLUDING THOSE RELATING TO FITNESS FOR A PARTICULAR PURPOSE, ARE EXPRESSLY EXCLUDED.

TITLE :  
 ABOVE-GRADE WALL DETAIL

SYSTEM :  
 CEM-CORE

DATE :  
 2024-10-24

SCALE :  
 1 1/2" = 1'-0"

PAGE :  
 9/9